

PROGRAMA DE BECAS DE APOYO A LA FORMACIÓN DE ALUMNOS DE LA ORQUESTA ESCUELA CARLOS CHÁVEZ CONVOCATORIA PÚBLICA 2018

MATERIAL DE AUDICIÓN DE LA ACADEMIA DE CLARINETE

TÉCNICA Y REPERTORIO

- 1.- Escala de Mi mayor
- 2.- Fragmento de un estudio de Jean Jean
- 3.- Concierto para clarinete y orquesta, W. A. Mozart
1°. Movimiento
- 4.- Sinfonía No. 3, J. Brahms
1° Movimiento: Desde el compás 36 al compás 46
2°. Movimiento: Desde el compás 1 al compás 22
- 5.- Sinfonía No. 6, L. van Beethoven
1° Movimiento: De la letra K hasta el final
2° Movimiento: Letras D y E
3° Movimiento: Desde el compás 122 al compás 133

Andante (Décomposez)

Aussi piano que possible. (Dans son traité d'instrumentation H. Berlioz appelle: "Son crépusculaire"
l'écho de l'écho.)

ppp
sans nuances ni vibrato

V Séparez sans respirer

Pressez un peu

vibrato mf

pp *mf*

Rall. 1er Mouvt

p *f* *très expr.* *p dim.* *pp* *f* *Séparez sans respirer* *exp.*

14

Pressez encore

exp. *exp.*

Rall.

1er Mouvt

Rall. long

très expr. *p dim.* *pp*

12 Facile avec doigté

4

95



99



104



108



111



115



120



125



130



135



138



141

143

146 Ossia

149

152

171

175

180

184

187

192



200



204



210



214



222



226



252



259



263



268



20

2

275

281

285

289

294

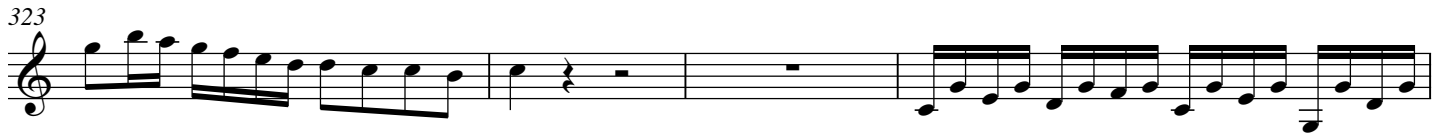
298

301

306

311

315



Johannes Brahms
Symphony No. 3 in F Major, Op. 90

Clarinet I in B \flat

Primer movimiento

in B

Allegro con brio

Desde el compás 36 al compás 46

31 *mutano in A* *mezza voce*
p grazioso

38 *pp* *p* [C]

42 *pp* *p*

46 *mutano in B* *2*

Detailed description: This block contains the musical notation for measures 31 through 46 of the Clarinet I part in the first movement. The music is written on a single staff in treble clef with a key signature of two sharps (D major). Measure 31 begins with a dynamic of *pp* and features a melodic line with eighth and sixteenth notes. Above the staff, the instruction *mutano in A* is written, followed by a fermata and a *2* indicating a second ending. The music then continues with *mezza voce* and *p grazioso*. Measure 38 has a *pp* dynamic. Measure 42 has a *pp* dynamic and a circled 'C' above the staff. Measure 46 has a *pp* dynamic and a *2* below the staff, with the instruction *mutano in B* above it.

Segundo movimiento

in B

Andante

Desde el compás 1 al compás 22

p espress. semplice

7

13 1 [A] *pp* *p*

20 1 [B]

Detailed description: This block contains the musical notation for measures 1 through 22 of the Clarinet I part in the second movement. The music is written on a single staff in treble clef with a key signature of two sharps (D major) and a common time signature (C). The tempo is marked *Andante*. The first measure has a dynamic of *p espress. semplice*. Measure 7 is marked with a *7*. Measure 13 has a circled 'A' above the staff, a *1* below the staff, and dynamics of *pp* and *p*. Measure 20 has a circled 'B' above the staff and a *1* below the staff.

Ludwig van Beethoven

Klarinette I

Symphony No. 6 in F Major, Op. 68 "Pastoral"

Erwachen heiterer Empfindungen bei der Ankunft auf dem Lande
Allegro ma non troppo (♩=66)

1er mov. letra K - final

2° mov. letra D - E

Szene am Bach («Escena junto al arroyo»)
Andante molto moto (♩=50)

Lustiges Zusammensein der Landleute
Allegro (♩=108)

3er. mov. compas 122 - 133