

PROGRAMA DE BECAS DE APOYO A LA FORMACIÓN DE ALUMNOS DE LA ORQUESTA ESCUELA CARLOS CHÁVEZ CONVOCATORIA PÚBLICA 2018

MATERIAL DE AUDICIÓN DE LA ACADEMIA DE CLARINETE

TÉCNICA Y REPERTORIO

- 1.- Escala de Mi mayor
- 2.- Fragmento de un estudio de Jean Jean
- 3.- Concierto para clarinete y orquesta, W. A. Mozart
1°. Movimiento
- 4.- Sinfonía No. 3, J. Brahms
1° Movimiento: Desde el compás 36 al compás 46
2°. Movimiento: Desde el compás 1 al compás 22
- 5.- Sinfonía No. 6, L. van Beethoven
1° Movimiento: De la letra K hasta el final
2° Movimiento: Letras D y E
3° Movimiento: Desde el compás 122 al compás 133

Andante (Décomposez)

Aussi piano que possible. (Dans son traité d'instrumentation H. Berlioz appelle: "Son crépusculaire"
l'écho de l'écho.)

ppp
sans nuances ni vibrato

V Séparez
sans respirer

Pressez un peu

vibrato *mf* *pp* *mf*

p *f* *très expr.* *p dim.* *pp*

Rall. 1er Mouvt

Pressez

V Séparez
sans respirer

exp.

Pressez encore

exp. *exp.*

Rall.

1er Mouvt

Rall. long

très expr. *p* *dim.* *pp*

12 Facile
avec ce
doigté

141



143



146 Ossia



149



152



171



175



180



184



187



275

281

285

289

294

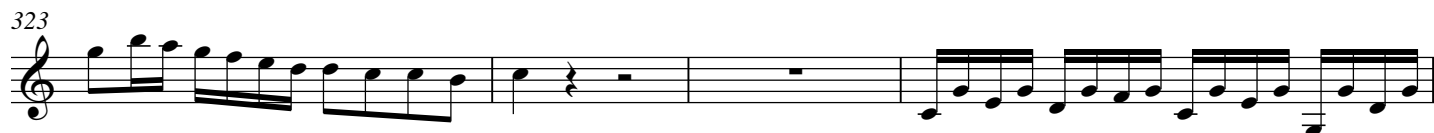
298

301

306

311

315



Johannes Brahms
Symphony No. 3 in F Major, Op. 90

Clarinet I in B \flat

Primer movimiento

in B

Allegro con brio

Desde el compás 36 al compás 46

31 *mutano in A* *mezza voce*
p grazioso

38 *pp* *p* [C]

42 *pp* *p*

46 *mutano in B* *2*

Detailed description: This block contains the first system of music for the Clarinet I part, covering measures 31 to 46. It is written on a single treble clef staff. The key signature is B major (two sharps). The time signature is 2/4. The music begins at measure 31 with a melodic line. Above the staff, there are performance instructions: 'mutano in A' above measure 36, 'mezza voce' above measure 37, and 'p grazioso' below measure 37. Dynamic markings include 'pp' (pianissimo) at measures 38 and 42, and 'p' (piano) at measures 38, 42, and 44. A first ending bracket labeled '[C]' spans measures 42 to 44. At measure 46, there is another key change instruction: 'mutano in B' above the staff, followed by a '2' below the staff, indicating a second ending.

Segundo movimiento

in B

Andante

Desde el compás 1 al compás 22

p espress. semplice

7

13 1 [A] *pp* *p*

20 1 [B]

Detailed description: This block contains the second system of music for the Clarinet I part, covering measures 1 to 22. It is written on a single treble clef staff. The key signature is B major (two sharps). The time signature is 3/4. The music begins at measure 1 with a melodic line. A dynamic marking of 'p espress. semplice' (piano, expressive, simple) is placed below the first measure. Measure numbers 7, 13, and 20 are indicated on the left side of the staff. Above measure 13, there is a first ending bracket labeled '[A]' starting at measure 13 and ending at measure 16. Above measure 20, there is a second ending bracket labeled '[B]' starting at measure 20 and ending at measure 22. Dynamic markings include 'pp' (pianissimo) at measure 15 and 'p' (piano) at measure 17.

Ludwig van Beethoven

Klarinette I

Symphony No. 6 in F Major, Op. 68 "Pastoral"

Erwachen heiterer Empfindungen bei der Ankunft auf dem Lande
Allegro ma non troppo (♩=66)

1er mov. letra K - final

470 *f* *f* *p* *f* *dolce*

482 *f* *f* *f* *dim.*

490 *pp* *p* *f* *sf* *sf* *sf* *p*

2° mov. letra D - E

Szene am Bach («Escena junto al arroyo»)
Andante molto moto (♩=50)

68 *p* Solo

74 *cresc.* *p* *tr.*

78 *f > p* *dolce* *cresc. f*

Lustiges Zusammensein der Landleute
Allegro (♩=108)

3er. mov. compas 122 - 133

119 *cresc.*

132 *p*